

# Peggy Notebaert Nature Museum Green Roof

CHICAGO, ILLINOIS



fall 2002



summer 2002

Conservation Design Forum was retained by the Peggy Notebaert Nature Museum to design a green roof demonstration garden for a 2,400 square foot portion of their roof. The green roof was designed to display a range of green roof technology that features wetland, extensive, semi-intensive, and intensive systems.

As a retrofitted roof garden, the roof can support an additional 40-90 pounds per square foot. This means the roof can support a variety of green roof vegetation from sedums to perennials and even a small tree. The green roof systems increase in thickness, weight and complexity as the garden moves away from the viewer, reflecting the structural capacity of the roof deck below. The soil increases from two and one half inches at the wetland to six inches at the semi-intensive system and eight inches at the intensive system. Plant communities are repeated over the increasing soil profiles to explore and demonstrate how plants adapt to an increase in growing medium.

CDF provided professional services for all phases of the project, including analysis of the existing roof for an appropriate green roof system, development of concept plans for the rooftop, preparation of cost estimates, and assistance in selecting green roof system manufacturers. In addition, CDF prepared construction drawings for the green roof installation and administered the construction process for the Nature Museum. The green roof was completed and opened for public display in 2002.

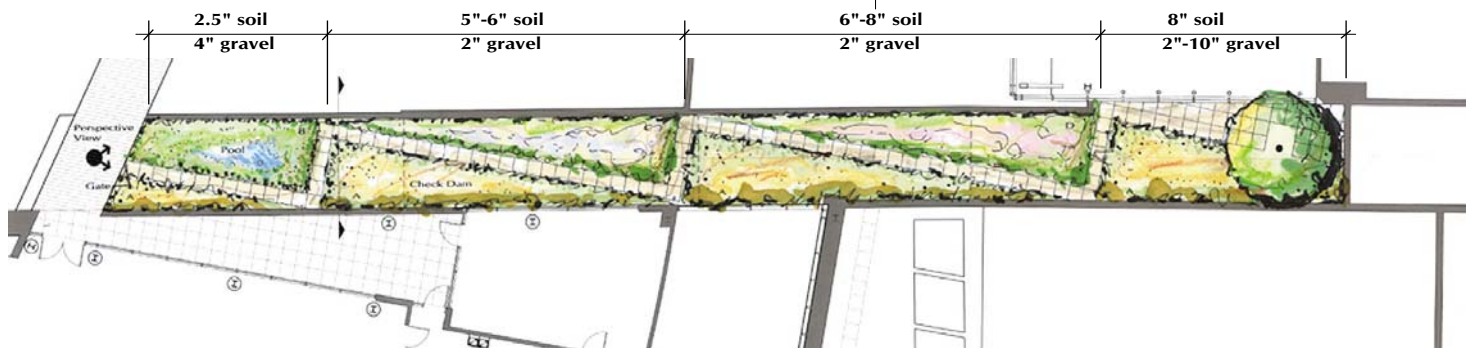
*client:* Peggy Notebaert Nature Museum

*project team:* Conservation Design Forum  
Project Lead; Landscape Architecture

Perkins & Will  
Architect

Roofscapes  
Green Roof Installers

*completion:* 2002



master plan

